

Creative Photography
Portrait/Lighting Assessment

Do Not Write on this Test – a scantron will be provided

1. What type of portrait would this be considered?



- a. Environmental
 - b. Formal
 - c. Candid
2. This piece of equipment will steady the camera and help to sharpen up your shots.
- a. Cable Release
 - b. Reflector
 - c. Tripod
3. What type of portrait would this be considered?



- a. Environmental
 - b. Formal
 - c. Candid
4. This type of portrait will capture a person(s) going about everyday life and activities.
- a. Environmental
 - b. Formal
 - c. Candid
 - d. Self
5. A reflector is a dark colored satin surface so it can absorb light.
- a. True
 - b. False
6. The very best lens for portraiture would be:
- a. 35mm
 - b. 24mm
 - c. 50mm
 - d. 100mm

7. This photo of Steve Jobs would be considered:



- a. Environmental
 - b. Formal
 - c. Candid
8. What Art Element stands out most in this portrait?



- a. Line
 - b. Contrast
 - c. Emphasis
 - d. Color
9. When working outdoors, direct sunlight is best for portraits.
- a. True
 - b. False
10. What accessory would you use to help fill in shadows when photographing?
- a. Tripod
 - b. Cable Release (remote)
 - c. Open Aperture
 - d. Reflector
11. This type of lighting would be considered:



- a. Back lighting
- b. Ambient lighting
- c. Artificial lighting
- d. Side lighting

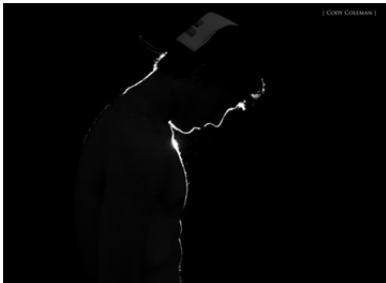
Creative Photography
Portrait/Lighting Assessment

Do Not Write on this Test – a scantron will be provided

12. Hard lighting is indirect lighting.
a. True
b. False
13. Soft/diffused lighting is excellent for all of the below EXCEPT:
a. Portraiture
b. Macro
c. Strong Shadows
d. Nature
14. What type of lighting is used in this photo?



- a. Side lighting
b. Hard lighting
c. Ambient lighting
d. Back lighting
15. What type of lighting would this be considered?



- a. Rim lighting
b. Spot lighting
c. Soft/Diffused lighting
d. Ambient lighting
16. A static portrait
a. Shows high energy.
b. Shows little concept and low energy.
c. Engages the audience.
d. Is interesting to look at.

17. This would be considered a dynamic portrait.



- a. True
b. False
18. What type of lighting is demonstrated in this photo?



- a. Soft/Diffused lighting
b. Rim lighting
c. Hard Lighting
d. Back lighting
19. What type of lighting do you see in this photo?



- a. Hard lighting
b. Side lighting
c. Combined lighting
d. Soft/diffused lighting
20. When photographing in low light situations and no flash is used, which of the following would be a more appropriate ISO?
a. 200
b. 800
c. 100
d. 50